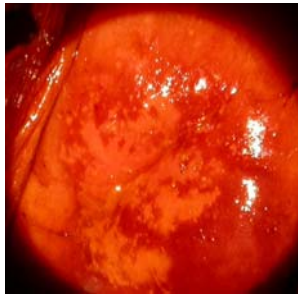


Lugol Iyot ile Görsel Muayene (VILI) için Klinik Referans Kartı

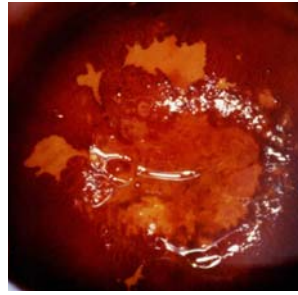
VILI NEGATİF



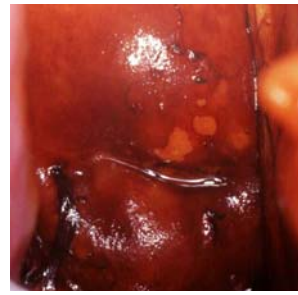
Siyah skuamöz epitel. Kolumnar epitelde renk değişikliği yok. Sari bölgeler yok



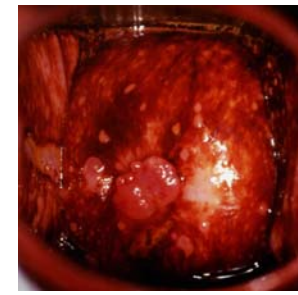
İmmatür skuamöz metaplazi ve inflamasyon belirtisi olarak yamalı, pamuk dokuma görünümlü sarı bölgeler



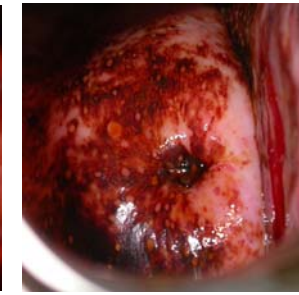
SKB'den uzakta uydusal sarı alanlar



SKB'den uzakta inflamasyona bağlı, pul biber görünümlü sarı alanlar

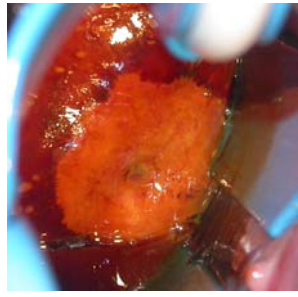
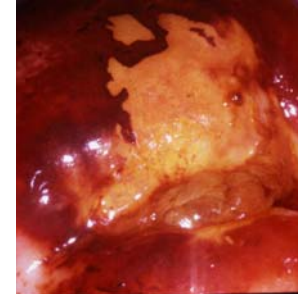
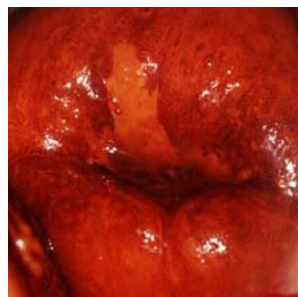
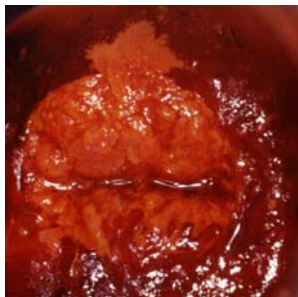
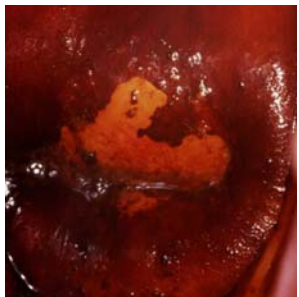


Inflamasyona bağlı tüm servikste, pul biber şeklinde sarı lekeler. Poliplerde iyot tutulumu yok



Lekli sarı alanlara bağlı leopar derisi görünümü

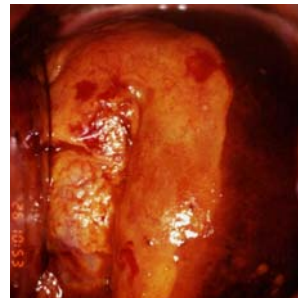
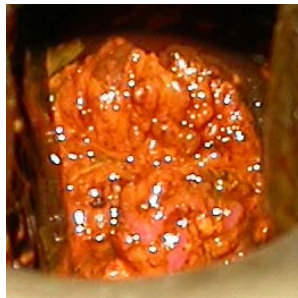
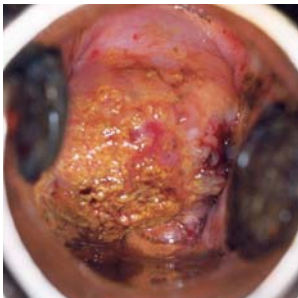
VILI POZİTİF



----- Üst dudakta SKB'ye yakın iyi tanımlanmış sarı alanlar ----->

<----- Os çevresinde, kanal içine uzanan geniş, sarı alanlar ----->

KANSER



----- Serviksteki büyümüş lezyonun yoğun, kalın, düzensiz sarı boyanması ----->

SKB: Skuamokolumnar bileşke

Kaynak: R. Sankaranarayanan, Ramani S. Wesley. A practical manual on visual screening for cervical neoplasia (IARC technical publication No 41) Available from: press@iarc.fr (IARC Press)